

**PERSONAL/SOCIAL**

Sauk County Public Health Dental Screening St. Claire Nutrition Program Food Pantry St. Vincent De Paul Sauk County Human Services	Baraboo Police Department Hope House Lutheran Social Services-Families Come First Paul Gasser-Love and Logic ABC Bible Club	Lions Club Salvation ARMY Boy's and Girls Club Parent Support Group People Helping People
---	---	---

**CAREER**

Baraboo Fire Department Baraboo Police Department Sauk County Rural Safety Days Baraboo National Bank	Baraboo Ambulance Services Library Program Community Classroom Presentations Badger Steam and Gas Alice in Dairyland	Culvers Don Larsen Chevrolet Gasser Construction Devils Lake State Park
--	--	--

**Volunteer Involvement**

The SSPT encourages and welcomes volunteer involvement as a way of making a difference in the academic, personal/social, and career development of all students at Al Behrman Elementary School. Here are some of the current volunteer activities.

Utilizing community volunteers is extremely helpful as well as an important piece of providing as much support to students as possible. The Baraboo SSPT utilizes volunteers in several capacities; some examples are: St. Claire Hospital and Kids Ranch. We recognize that there are many community members with specific skills and abilities who might be interested in sharing with

our students. Additional volunteers, as well as new ideas, are always welcome. If you are interested, please contact: Jamie Carney, School Counselor by phone: (608) 355-3910 or email [jcarney@barabooschools.net](mailto:jcarney@barabooschools.net) or John Blosenski by phone (608) 355-3910 or email [jblosenski@barabooschools.net](mailto:jblosenski@barabooschools.net)

**Focus For Improvement**

The AL Behrman SSPT is passionately committed to continuous improvement in order to provide effective programs and services to our students and families in accordance with the school counseling program in alignment with ASCA and WCSCM models.

**Behavior Goal:** By the end of 2012-13 school year SWISS referrals on the playground will decrease by 200 or more compared to the 2011-12 school year of 340 referrals.

**Community Goal:** For the school year 2012-13 ABE will add a minimum of three more community connections (18 last year) while strengthening our current community connections and involvement / attendance (1430 last year) by a minimum of 15% (+215) this year.

**Academic Goal:** By the end of the year (May 2013) 100% of the teachers will incorporate Marzano's 6 steps to vocabulary instruction to teach our academic vocabulary lists so that student growth can be seen on the prescribed common vocabulary assessments.

**Keeping You Informed**

The Al Behrman Elementary School Student Support Personnel Team keeps students, parents, faculty, and administration informed of daily, weekly, monthly, and yearly activities through three main forms of communication:

**Personal Contact/Communication:**

- \* **Students:** Announcements, assembly meetings, individual or small group meetings with teacher, counselor and/or principal.
- \* **Parents:** Individual meetings with teacher, counselor and/or principal, parent workshops, Open House, communication and activity nights.
- \* **Staff:** Monthly staff meetings, individual or small group meetings with principal and/or counselor.
- \* **Community:** School Board - Provide information on School Board Meetings. Annual advisory board meetings.

**Printed Materials:**

- \* Al Behrman Elementary School Parent Newsletters include articles by Support Team members regarding academic opportunities, career information, and cover topics related to personal/social development.
- \* The SSPT offers access to post-secondary opportunities through their Career Fair held in early Spring at the Baraboo Armory.
- \* District-wide communications are sent home in English and can be translated upon request.

**Technology:**

- \* Baraboo School District Website <http://www.baraboo.k12.wi.us/>
- \* Al Behrman School Website <http://www.baraboo.k12.wi.us/schools/south/>
- \* Elementary Counseling Department Website [http://www.baraboo.k12.wi.us/schools/elementary\\_guidance.cfm](http://www.baraboo.k12.wi.us/schools/elementary_guidance.cfm)
- \* Parent notifications through the Baraboo messenger and Baraboo Auto Dialer System.
- \* School District TV station (Channel 98): Provides information on school board meetings.
- \* Infinite Campus (Online Student Information System for grading, scheduling, attendance, announcements, and school related information.

The Al Behrman Elementary School Student Support Personnel Team will present the 2012 SPARC-W document to staff, administration, the school board, and the Baraboo community through printed copies and via the Al Behrman School website.



[www.baraboo.k12.wi.us](http://www.baraboo.k12.wi.us)

**2012 Support Personnel Accountability Report Card for Wisconsin**

A continuous improvement document sponsored by the Wisconsin School Counselor Association

**Principal's Comments**

As the principal of Al Behrman (ABE) Elementary School, I am honored to be a member of the Student Support Personnel Team (SSPT). Many members of our staff have dedicated time and energy to be involved in the common goals of supporting our students in the academic, personal/social, and career development domains of a comprehensive school counseling model through this accountability reporting process.

As team members we are utilizing data driven approaches and strategies when implementing interventions which support student achievement as well as a positive school culture/climate. As student support personnel team members we have been able to

find a strong connection and correlation between the implementation of PBIS and the Wisconsin Comprehensive School Counseling Model/American School Counselor Association National Standards. Through these approaches we have been able to provide positive interventions and supports that have increased student success both behaviorally and academically.

Through the collaboration of our student support personal team and the use of data driven approaches we are making a positive impact on every student since of belonging and self-worth. By striving for this we are ultimately impacting student achievement along with building a positive school climate / culture.

**Student Support Personnel Team**

The Comprehensive School Counseling Program, in collaboration with parents, teachers, administrators, and the community, prepares today's students to be tomorrow's productive citizens. The mission of the Baraboo School District's Comprehensive School Counseling Program, based on the American School Counselor Association's (ASCA) and the Wisconsin Comprehensive School Counseling Model's (WCSCM) standards, is to facilitate student's growth in the areas of personal/social and career development, and to guide them toward excellence in their academic achievement.

The SSPT incorporates the Wisconsin Comprehensive School Counseling Model and the school counselors have completed the Level III training. The elementary school counselor works to provide a comprehensive school counseling program that is designed, coordinated, implemented, and evaluated to help each student at ABE achieve under the three domains of the ASCA National and the WCSCM.

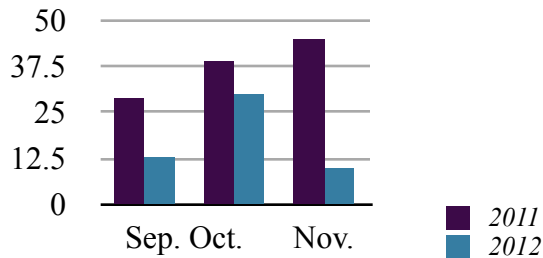
Title	Education	Experience	Membership/Association/Organization
Director of Special Education/ Pupil Services	Masters +	2 Years	WI Council for Administrators for Special Services Association for Supervision for Curriculum Development
Principal	Masters +	2 Years	Association of WI School Administrators
School Psychologist	Masters +	17 Years	Vacationland School Psychologist Organization
Elementary School Counselor	Masters	3 Years	Wisconsin School Counselor Association
Reading Specialist	Masters +	23 Years	International Reading Association
Speech and Language Pathologist	Masters	12 Years	American Speech, Language and Hearing Association
Special Education Teacher	Bachelors +	2 Years	Wisconsin Education Association Council
English Language Learner Teacher ELL	Masters +	14 Years	WI Teachers of English to Speakers of Other Languages
School Nurse	BSN	7 Years	Wisconsin Association of School Nurses
PBIS Team Coach	Masters +	4 Years	Association of Wisconsin School Administrators
Special Education Teacher	Bachelors	5 Years	Wisconsin Education Association Council

## School Climate and Safety

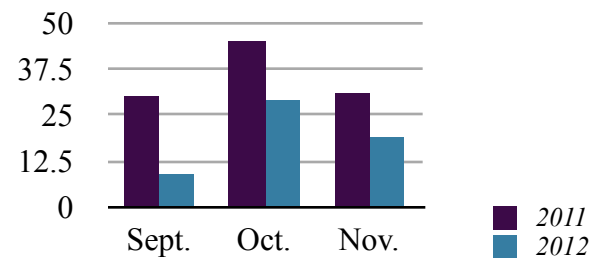
*School climate and safety are directly impacted by the efforts of the Student Support Personnel Team.*

During the 2010/2011 school year, staff were trained to lead Al Behrman Elementary School in the implementation of Level 1 (universal) Positive Behavioral Interventions and Supports (PBIS). During this implementation of universal level one interventions, staff created a common language for expectations within the building. Students were given immediate feedback through positive reinforcements in the hallways, classrooms, bathrooms and on the playgrounds. This program has helped to create a consistent structure for staff and students resulting in stability throughout our school. This stability has culminated a positive school culture/climate for our students that encourages a positive learning environment.

As Level 1 implementation met fidelity during the 2010/2011 school year, this 2011/2012 school year the PBIS team has attended trainings to begin the implementation of Level 2 interventions which can be utilized to further assist students regarding behavior and choices. We have begun Level 2 interventions and are monitoring data utilizing the School-Wide Information System (SWIS). The graphs below depict the consistent decline in office discipline referrals as Level 2 interventions as well as universal interventions are being utilized. As interventions become more readily available there is a decline in office discipline referrals resulting in a more positive school culture/climate.



Office Discipline Referrals on the Playground



# of Physical Aggression Referrals

## Student Results

*The SSPT at Al Behrman Elementary School is continuously addressing student needs under the three domains of the ASCA National and the WCSCM: academic, personal/social, and career development. Data driven results are essential to the implementation of the National Standards because they are used in the development, evaluation, and improvement of the student learning process.*

ACADEMIC	PERSONAL/SOCIAL	CAREER
<p><b>ASCA Standard</b> <b>A:B2.1</b> Establish challenging academic goals in elementary, middle/jr. high and high school.</p> <p><b>WI Standard</b> <b>B.4.2.1</b> Demonstrate the ability to establish challenging academic goals in elementary school.</p> <p>Students were provided two classroom guidance lessons centered with academic goal setting. During the first lesson students explored aspects of a <i>smart goal</i>. During the second lesson students developed their own short term academic goal. As a result of both teacher, parent and counselor lessons/encouragement, students were able to establish challenging long and short term academic goals. These goals will be monitored by the teacher throughout the school year. The chart below depicts that 80% of 5th grade students, during the guidance lesson, were able to create a short term smart goal with 20% needing improvement on identifying smart goal steps.</p> <p>● Created Smart Goal ● Needs Improvement on Goal Setting</p> <p>5th Grade Smart Goal Results</p>	<p><b>ASCA Standard</b> <b>PS:A1.6</b> Distinguish between appropriate and inappropriate behavior</p> <p><b>WI Standard</b> <b>D.4.2.1</b> Discuss and explain the differences between inappropriate and appropriate behavior</p> <p>Nighthawk Club-A Level 2 intervention of the Positive Behaviors Intervention Program (PBIS)-The Al Behrman Elementary staff are in their first year of implementing Level 2 interventions. One Level 2 intervention is a type of check in check out program which includes a daily point sheet. This intervention is data driven in regards to the students who receive this service. The school counselor and school psychologist work together to run weekly reports to identify students in need of this intervention. The school counselor and school psychologist then collaborate with parents, teachers and students to match students up with a "greeter" to begin the check in check out program. As a result students have made many gains behaviorally. As shown in the chart below 75% of students receiving this intervention met their goal at least 80% of the time.</p> <p>● Met Goal ● Didn't Meet Goal</p> <p>Nighthawk Club Student Results</p>	<p><b>ASCA Standard</b> <b>C:CI.1</b> Understand the relationship between educational achievement and career success.</p> <p><b>WI Standard</b> <b>G.4.1.2</b> Discuss and explain behaviors and decisions that reflect interests, likes, and dislikes</p> <p>The SSPT recognizes the importance of early career exploration for all students in the elementary setting. There is a career fair held for 4th and 5th grade students which hopes to create a connection for students in relation to what they are learning in school and how they will utilize it within their future careers. A career survey was issued to students after the career fair and lessons had been completed. The data shown below indicates that 89% of students understand how what they are learning in school will be used in a future career.</p> <p>● Understands Connection ● Does Not Understand</p> <p>Career Survey</p>

## Major Achievements

*The Al Behrman Counseling Department and the SSPT are proud of their commitment to designing and implementing programs which support student success.*

- \* **Positive Behavioral Intervention & Supports (PBIS) Program:** PBIS is a school-wide initiative that structures the learning environment to support both academic and social successes of all students.
- \* **PBIS Tier 2:** Tier 2 Intervention Techniques utilized and data tracked-Social & Academic Groups-Check In Check Out
- \* **Professional Learning Community (PLC):** PLC is a model for school improvement in which educators are committed to working collaboratively in ongoing processes of collective inquiry on action research in order to achieve better results for the students they serve.
- \* **Dental Sealant Grant:** This grant provided dental sealants to students in grades 2 and 5 at Al Behrman.
- \* **Intervention Times:** Intervention times at every grade level for every student meeting needs at their academic level based on data.
- \* **Problem Solving Team:** A team of educators who meet twice/month to plan individual student academic and behavioral interventions.
- \* **Co-Teaching:** There have been trainings provided to enhance and promote inclusion in the classroom at every grade level.
- \* **Classroom Matrices** in each classroom indicating clear set of behavioral expectations.
- \* **Goal Setting Conferences:** District-wide Parents, teachers and members of SSPT met together to create academic goals for the year with students.
- \* **Service Learning Day:** Teaches students science, math, etc through volunteerism. Also increases community connections and career exploration.
- \* **Community Connections:** Community agency connected to every classroom for activities throughout the year.

## Measurements

*AL Behrman Elementary School's SSPT incorporates measurements in to the management and responsiveness of our student support programs. The SSPT analyzes data from these measurements to alter and improve programs through data based decision-making. This ensures the academic, personal/social, and career needs of all students are met through the school counseling program. This information is also used to educate parents and work collaboratively with teachers to improve student achievement.*

### ACADEMIC

**Wisconsin Knowledge and Concepts Exam (WKCE):** The results of the WKCE are used to provide all students with necessary supportive services and programs.

**Measures of Academic Success (MAPS) Assessments:** Grades 2-5 are tested biannually. This is used to understand student growth.

**Fountas and Pinnel:** A benchmark assessment that provides materials and procedures for observing and assessing the reading levels and behaviors of students. Given three times per year.

**AIMS Web:** A benchmark assessment for grades 1-5. We use it to assess reading and math progress weekly.

**PALS:** A benchmark assessment tool for Kindergarten in Wisconsin.

### PERSONAL/SOCIAL

**PBIS Data Reports:** Data is evaluated weekly to identify students with potential person/social concerns. Data also provides an overview of school-wide problem behavior areas, locations and times, and individual reports for professional educators.

**Major/minor referral reports are also an indicator of personal/social concerns:** The data explains the number of major and minor referrals, when the referrals are taking place, and which behaviors are being employed. These reports assist the SSPT to change strategies in order to alter negative behaviors and continue positive behaviors.

**Attendance data is utilized to assess student improvement/concerns:** Indicates possible obstacles in student achievement.

**Special Education Assessments Explore the World of Work Career Inventory:** This inventory is given to all fourth graders to explore careers and connect school to work.

### CAREER

**Career Explore Inventory:** This inventory is given to all fifth graders to further explore careers and help them to understand career clusters.

**Career Fair:** An annual district-wide career exploration even for all fourth and fifth graders.

**Classroom Guidance Lessons:** Classroom career lessons exploring careers and character traits of successful citizens, workers and students are completed at each grade level K-5.

## Community Partnerships

*Community Partnerships are vital to our students' success and we actively seek partnerships with parents, community members, business organizations, and colleges/universities. We are grateful for these relationships. These partnerships are vital to the success of our students and play an integral role to our comprehensive school counseling program by providing valuable educational experiences.*

### ACADEMIC

4H, Discoverers' Club, Decimal Math, Kid's Ranch, COSI, August Derleth, Elk's Dictionary Donations

Spelling Bee, GEO Bee, International Crane Foundation, CESA 5: Visual Impairment Services

Boy's and Girl's Club, Ho Chunk Youth Services, Sauk County Conservation Department, The Crane Foundation